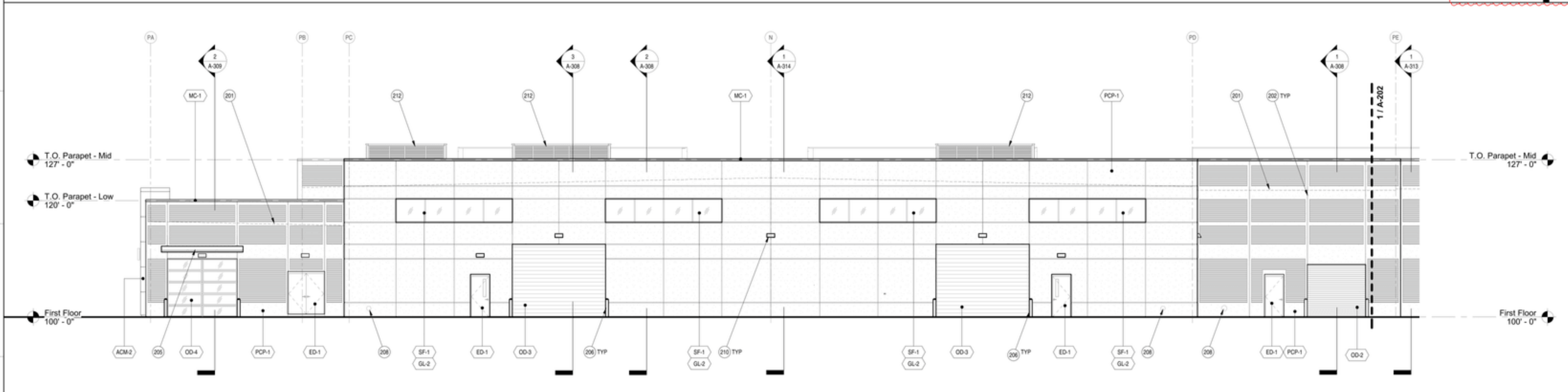
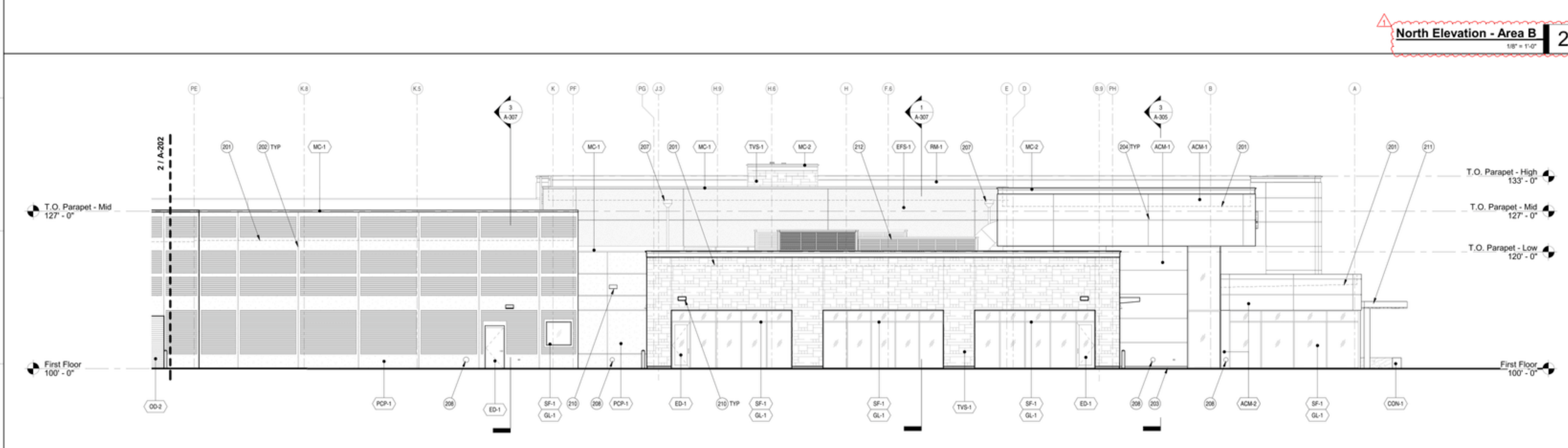


**East Elevation 3**  
1/8" = 1'-0"



**North Elevation - Area B 2**  
1/8" = 1'-0"



**North Elevation - Area A 1**  
1/8" = 1'-0"

**MATERIALS**

ACM1	ALUMINUM COMPOSITE PANEL WALL SYSTEM MANUFACTURER: ALPOLC COLOR: SILVER
ACM2	ALUMINUM COMPOSITE PANEL WALL SYSTEM MANUFACTURER: ALPOLC COLOR: MICA MP3 GREY
ACM3	ALUMINUM COMPOSITE PANEL WALL SYSTEM MANUFACTURER: ALPOLC COLOR: PIGMENTO GZZ GREY
CON-1	ARCHITECTURAL CAST IN PLACE CONCRETE SEAT WALL WITH FORMLINER
CW-1	ALUMINUM CURTAINWALL SYSTEM MANUFACTURER: KAWNEER 1600 SYSTEM 2 COLOR/FINISH: CLEAR ANODIZED (SEE FRAME ELEVATIONS)
ED-1	FLUSH HOLLOW CORE STEEL DOOR WITH HIGH PERFORMANCE COATING COLOR: T80 (SEE DOOR SCHEDULE)
ED-2	ALUMINUM GLASS STOREFRONT DOOR(S) MANUFACTURER: KAWNEER WIDE STYLE COLOR: CLEAR ANODIZED (SEE DOOR SCHEDULE)
EFS-1	EXTERIOR INSULATION FINISH SYSTEM MANUFACTURER: STO CORPORATION FINISH: FINE TEXTURE COLOR: MATCH ACM-1
GL-1	CLEAR INSULATED LOW-E GLAZING
GL-2	TRANSLUCENT INSULATED LOW-E GLAZING FINISH
MC-1	PRE-FINISHED METAL COPING AND SHEET METAL FLASHING MANUFACTURER: BERRIDGE MFG. COLOR: LEAD-COTE
MC-2	PRE-FINISHED ALUMINUM COPING ASSEMBLY WITH TOP CAP AND CUSTOM FASCIA VERTICAL FACE TO BE PMS 281C REMANINDER OF METAL TO BE SILVER METALLIC FINISH RE: DETAIL 14/A-202
OD-1	ALUMINUM FRAME GLASS OVERHEAD DOOR COLOR/FINISH: CLEAR ANODIZED (SEE DOOR SCHEDULE - ODP)
OD-2	INSULATED COILING STEEL OVERHEAD DOOR FINISH: FACTORY FINISH COLOR: MATCH EXTERIOR MAJ DOORS (SEE DOOR SCHEDULE - OPCS)
OD-3	ALUMINUM AND CLEAR ACRYLIC POLYCARBONATE HIGH-SPEED ROLLING DOOR RE: DOOR SCHEDULE (OVCP)
OD-4	ALUMINUM FRAME OVERHEAD DOOR WITH POLYCARBONATE GLAZING COLOR/FINISH: CLEAR ANODIZED RE: DOOR SCHEDULE (OPPA)
PCP-1	PRECAST INTEGRAL COLOR CONCRETE WALL PANELS WITH ACID ETCHED FINISH (LIGHT AGGREGATE EXPOSURE) AND FORMLINER PROFILE PATTERN FITZGERALD 1407 FLUTED RB RE: A-107 & A-108
RM-1	ROOF MEMBRANE AT BACK SIDE OF PARAPET COLOR: GRAY
SF-1	ALUMINUM STOREFRONT SYSTEM MANUFACTURER: KAWNEER TRIFAB VERSAGLAZE 451-T COLOR: CLEAR ANODIZED (SEE FRAME ELEVATIONS)
TVS-1	THIN VENEER SLATE MANUFACTURER: CAMARIA SLATE PRODUCTS COLOR: SHADOW GREY

**KEYNOTES**

201	LINE OF ROOF BEYOND PARAPET
202	PRECAST PANEL JOINT WITH SEALANT COLOR: T80
203	CAST IN PLACE CONCRETE WALL CURB WITH TEXTURED ACRYLIC COATING, COLOR: T80 RE: A-109
204	ACM PANEL JOINT REVEAL
205	PREFABRICATED OPEN/LOUVERED ALUMINUM CANOPY RE: WALL SECTIONS
206	F 10 GALVANIZED CONCRETE FILLED STEEL PIPE BOLLARD WITH HP COATING, COLOR: T80
207	THRU-WALL SCUPPER WITH PRE-FINISHED METAL CONDUCTOR HEAD AND DOWNSPOUT, COLOR: LEAD-COTE (SEE WALL SECTIONS)
208	ROOF DRAIN OVERFLOW DISCHARGE, RE: PLUMBING
209	INTERNALLY ILLUMINATED BUILDING MOUNTED SIGNAGE, BY OWNER RE: ELECTRICAL
210	WALL MOUNTED EXTERIOR LIGHTING, RE: ELECTRICAL
211	PREFINISHED ALUMINUM PLANK CANOPY SYSTEM MANUFACTURER: AVASER COLOR: CLEAR ANODIZED FRAMING, WOOD GRAIN POWDERCOAT PLANKS
212	PREFINISHED PLASTIC LOUVERED SCREENWALL DIRECT MOUNTED TO ROOF TOP UNITS COLOR: T80



**Subaru of Olathe**  
New Automotive Dealership and Service Center  
Baxter Automotive Group  
119th and Renner Road  
Olathe, KS

Revisions:

1	18g.kat.01	20220301
---	------------	----------

Project #: 210301  
Construction Documents  
08 March 2022