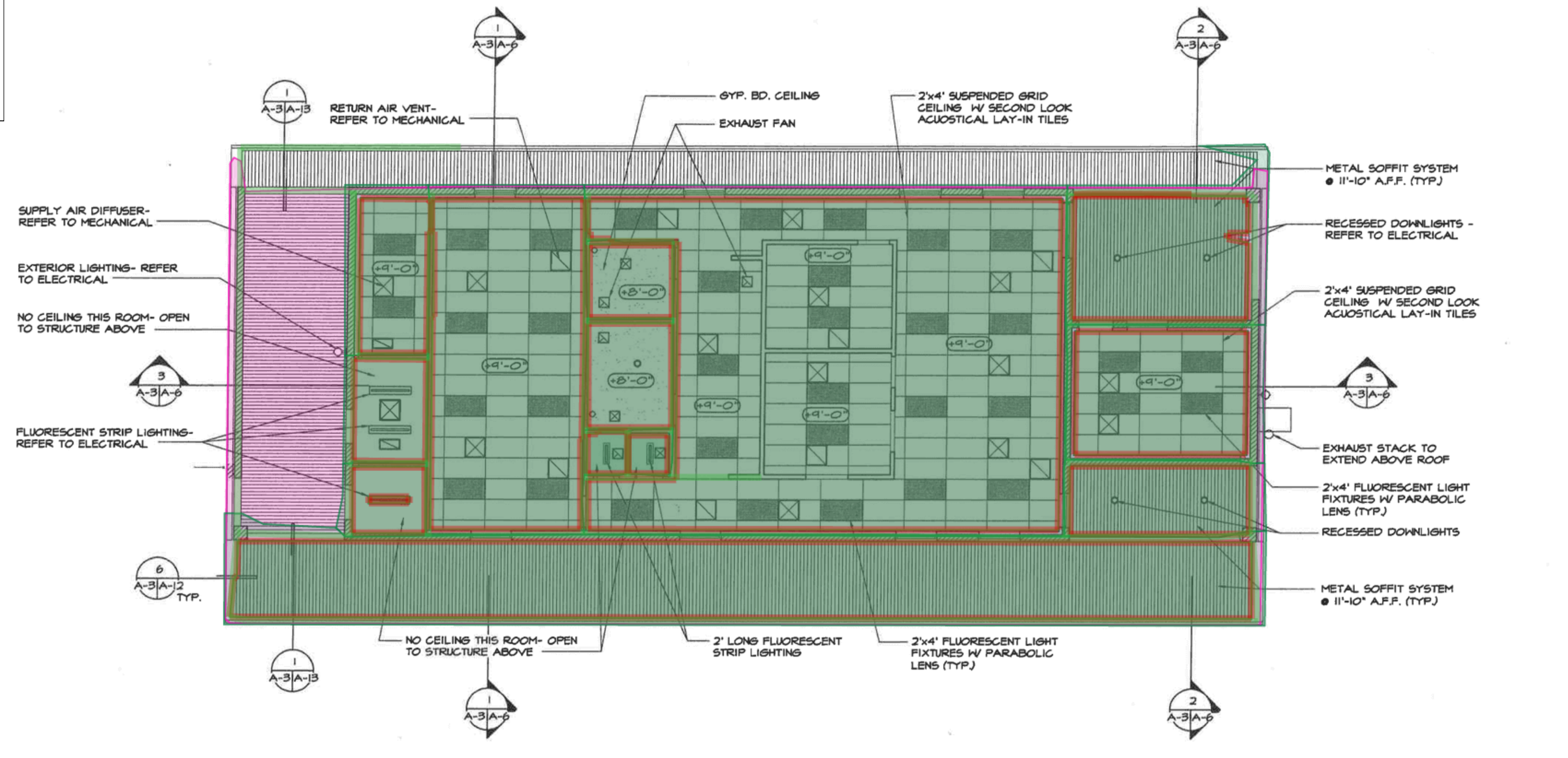


Total areas	
Footprint 1	1,045.56 SF
Net area 15	823.07 SF
Gross area 12	965.77 SF
Gross Internal Area... 13	893.01 SF
Total lines	
Wall centerline 52	334.48 FT
Wall Perimeter 15	435.37 FT



1 REFLECTED CEILING PLAN
 SCALE: 3/16" = 1'-0"
 NORTH

REVISIONS		DATE		DATE		DATE	
SYMBOL	DESCRIPTION	APPROVED	DATE	PREP. BY	DATE	DATE	DATE

SUBMITTED:	DESIGN:	DATE:
DRAWN:	CHECKED:	DATE:
FP:		

DEPARTMENT OF THE NAVY	NAVAL FACILITIES ENGINEERING COMMAND	CALIFORNIA
SAN DIEGO	SOUTHWEST DIVISION NAVAL FACILITIES	
	YU-0013R2 FUEL FARM BUILDING	
	MARINE CORPS AIR STATION	
	YUMA	

SATISFACTORY TO:	DATE:
FAC. MANG. OFFICER:	DATE:
DIRECTOR OF ENG.:	DATE:
SW BN FOR COMMANDER NAVFAC	DATE:

PROJECT LOCATION	
CONSTR. CONTRACT NO.	
SPEC. NAVFAC DRAWING NO.	

SIZE D IF SHEET IS LESS THAN 22" X 34" IT IS A REDUCED PRINT - SCALE REDUCED ACCORDINGLY
PWO. NO.
100% SUBMITTAL
SHEET 15 OF A-3